



**BOON EDAM**  
YOUR **ENTRY** EXPERTS.



DETER UNAUTHORIZED ENTRY

## TRILOCK 75.

THE HIGH END, RELIABLE TRIPOD TURNSTILE





## OVERVIEW

Designed for indoor or outdoor use, this tripod turnstile slows traffic down and supports guard staff on the location which needs control. While the turnstile can be used for one-way traffic, typical traffic flow is two-way, one direction at a time. Users must pause and take turns before proceeding through the lane.

## ECONOMICAL FOR LIFE

The sturdy construction and simple mechanisms that constitute this entrance solution, mean that service and maintenance are reduced. The tough materials used also mean that the turnstile guarantees a long lifespan. The combination of these two features is that you are left with an economical product which will serve you and your valuable visitors for the lifespan of the tripod turnstile.

## KEY FEATURES

- Premium materials
- Smooth, quiet rotation
- Easy installation
- Rigid or collapsible arm set
- Left or right-handed installation
- Additional flexible options available to fine-tune or 'Level Up'



## KEY BENEFITS

- Capable of operating under abusive conditions
- Aesthetics suitable for indoor applications
- Minimal maintenance
- Quiet operation
- Effective at managing large crowds

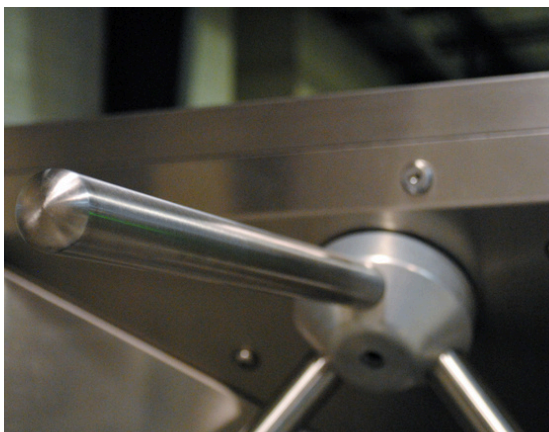
## SUGGESTED SEGMENTS

- Office buildings
- Libraries
- Museums
- Leisure / recreation
- Transit
- Manufacturing
- Education

## SCALABLE FLEXIBILITY IS THE FUTURE

The ability to integrate a large variety of secondary security technology into our tripod turnstiles is the ideal way in which to fine-tune by 'Leveling Up' their entrance security when increased protection is required.

Meeting your security goal easily and within your budget is the reason why we work together with you to ensure that by using these options, you end up with a product that outperforms the others safely, beautifully and profitably.

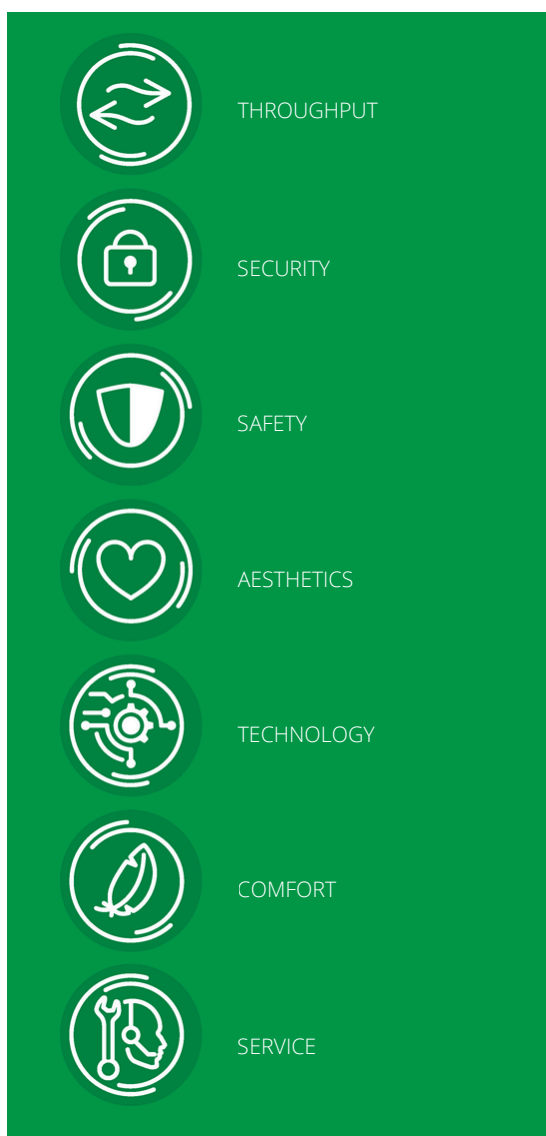


## PUTTING THE POWER BACK IN YOUR HANDS

One size does not fit all, and that is why we at Boon Edam believe in offering modular solutions. This approach allows the security professional to design a tailored entrance solution that balances security and safety with aesthetics.

The result is a unique entrance that fits the needs of each industry, application and individual company. To get started, choose from an array of quality standard options. Then, 'Level Up' where it matters most to your company – whether that be in terms of throughput, security, safety, aesthetics, technology or user comfort – or a combination of each. A modular solution approach truly puts the power back into your hands - the power to create a refined entry with ease.

**You can level up in any of these categories:**



# LEVEL UP

If our standard specifications do not quite suit your needs, we open up opportunities for you to 'Level Up' where it counts most. You can also do this according to your most motivating value driver.

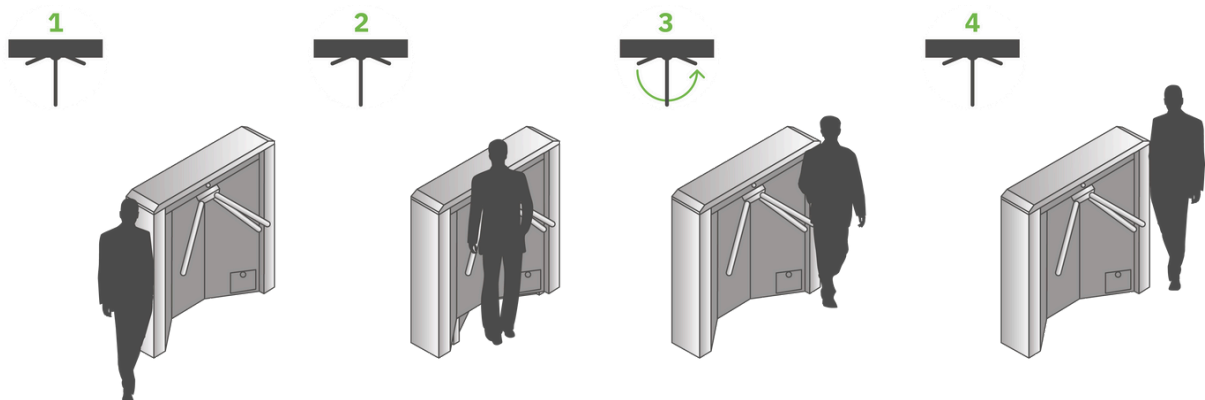
The specification table shows you our standard product options, and to the right of these, you can easily see, and consider, any compatible 'Level Up' options for fine-tuning the Trilock 75.



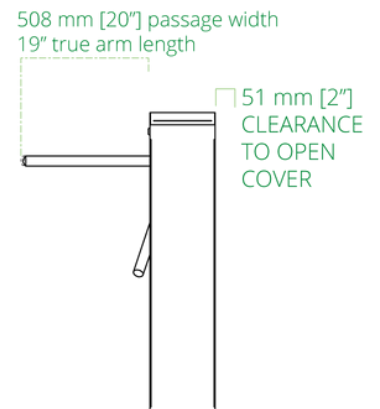
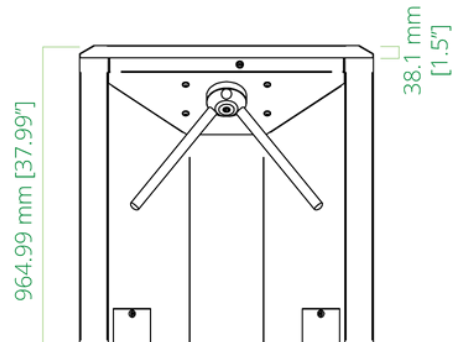
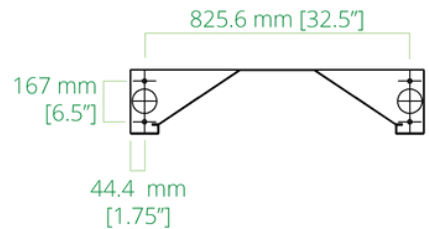
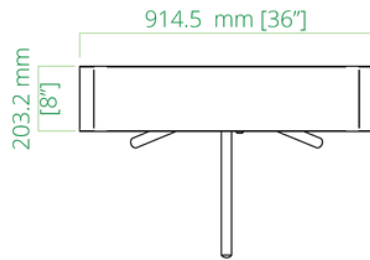
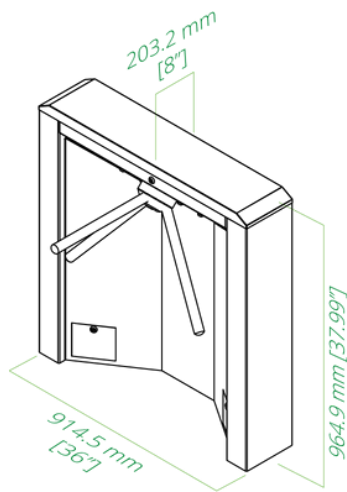
## TECHNICAL SPECIFICATIONS

	THROUGHPUT	STANDARD	LEVEL UP OPTIONS
	Throughput	20-25 People per minute	
	Cabinet Width	203 mm / 8"	
	Cabinet Height	965 mm / 38"	
	Cabinet Length	914 mm / 36"	
	Passage Width	508 mm / 20"	559 mm / 22" for collapsible arm version
	Overall Lane Width	711 mm / 28"	762 mm / 30" for collapsible arm version
	Barrier Height	825 mm / 32-5/8"	
	SECURITY	STANDARD	LEVEL UP OPTIONS
	Access Control Integration	Dry contacts for virtually any access control device	
	Key Switch Panel	Electric key switch for entry and exit	
	SAFETY	STANDARD	LEVEL UP OPTIONS
	Fail Safe Operation	Lock and motor both disengage in the event of a power failure	Fail secure: lock and motor remain locked in the event of a power failure
	Fire Alarm Connection	Emergency egress settings depending on local regulations and or customer request	
	Emergency Opening		Collapsible arm
	AESTHETICS	STANDARD	LEVEL UP OPTIONS
	Cabinet Material	Stainless steel	
	Cabinet Color	Stainless steel	Other colors and branding: On special request
	Cabinet Shape	Squared cabinet	
	TECHNOLOGY	STANDARD	LEVEL UP OPTIONS
	Power Supply	110-240 VAC, 50 / 60 Hz	<b>INTEGRATION OPPORTUNITIES:</b> <ul style="list-style-type: none"><li>BoonTouch external control panel (up to 6 lanes)</li></ul>
	Operating Power	220W	
	Operating Temperature	-15°C / +5°F to +50°C / +113°F	
	Weight	51 kg / 135 lbs	
	Card Reader Mount	On top of turnstile cabinet (mounted in field)	
	COMFORT	STANDARD	LEVEL UP OPTIONS
	Disabled Access		Trilock Side Gate with 915 mm / 36" passage width
	Visual Cues		
	Extended Arm Lengths		

WORKING PRINCIPLE



TECHNICAL DIMENSIONS





## SERVICE AND MAINTENANCE

With hundreds or thousands of visitors passing through an entry every day, continued and reliable operation is vital. Regular service and maintenance can prevent unexpected hardware breakdowns. Boon Edam's service and maintenance teams across the world are experienced in the effects the local conditions have on the wear and tear of your entry solutions and can offer specialized service and maintenance contracts that correspond to those conditions perfectly.



## COMPLIANCE

The goal of an organization is to safeguard the valuable assets inside – both people and property. As is often the case, industries must comply with relevant local and global laws, policies and regulations, to achieve the important goal of overall safety and security. Failure to meet the appropriate measures and criteria set out in these regulations could result in catastrophic incidents and substantial fines.

Boon Edam security entrances are trusted solutions that allow organizations to meet compliance regulations related to restricting access to areas within a building. We take compliance and safety very seriously and ensure that our products are manufactured, installed and maintained to keep up the strict criteria required in all our countries. We are always improving and always committed to making sure our products are compliant and certified. More information can be found on our website under 'Our Responsibility'.

### **The Trilock 75 complies with the following North American standards:**

- UL standard 294 (not applicable for collapsible arm version)
- CAN/ULC 60839-11-1:2022 Ed.2 (not applicable for collapsible arm version)

# OUR REACH IS GLOBAL.

---

We have been in business for 150 years manufacturing premium aesthetic and security entrance solutions in the Netherlands, United States of America and China. We can confidently say that we cover every corner of the globe with subsidiary companies in major cities across the globe. Furthermore our global export division not only partner with our distributors, but also offer direct sales and service to every territory. This wide net allows us to have a strong global footprint as well as a personal grasp of local markets and their unique entry requirements.

To find your closest Boon Edam expert, please go to:  
[www.boonedam.us/contact](http://www.boonedam.us/contact)



**Boon Edam Inc.**

T +1 910 814 3800

E [sales@boonedam.us](mailto:sales@boonedam.us)

I [www.boonedam.us](http://www.boonedam.us)

V2-91125

  
**BOON EDAM**  
YOUR **ENTRY** EXPERTS.