

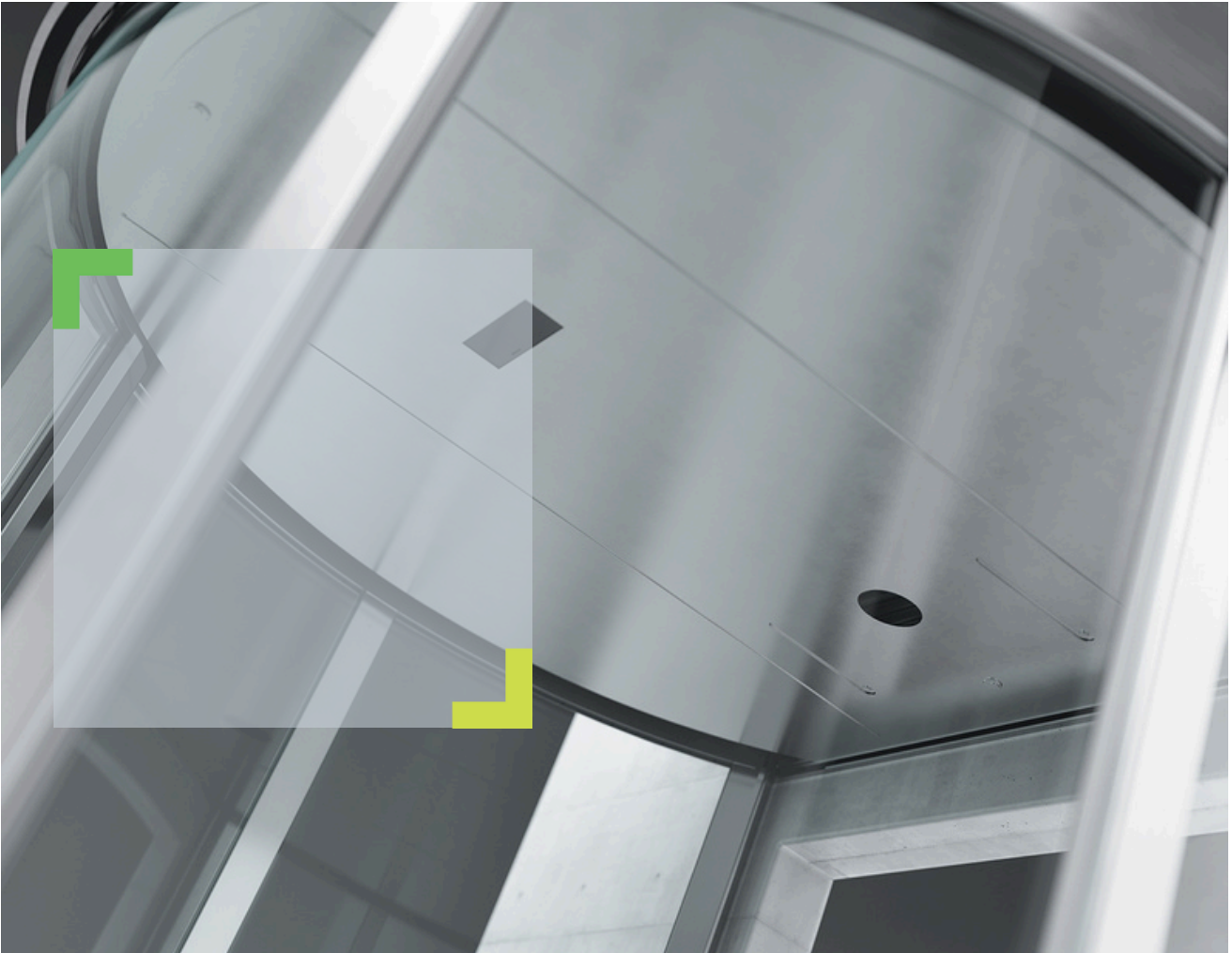


 **BOON EDAM**
YOUR **ENTRY** EXPERTS.



STEREOVISION.

ADVANCED **ANTI-PIGGYBACKING** TECHNOLOGY



OVERVIEW

Unauthorized entry is a real threat in today's world because most doors or access control systems cannot prevent it from happening proactively. These devices can sound an alarm or record the event, but it is up to the security staff to respond quickly after an unauthorized user is already inside. StereoVision has been proven through rigorous testing to be extremely accurate at detecting piggybacking attempts, and when paired with a security revolving door or mantrap portal and access control system, can prevent unauthorized entry without the need for manned supervision.

STAFF REDUCTION AND PREDICTABLE METRICS

StereoVision accurately and reliably prevents unauthorized entry. As a result, organizations have been able to reallocate or reduce security staff previously responsible for managing the entry. Frequently a security door with StereoVision can pay for itself in just a few years, with a continued reduction in expenses every year after. As a result of its constant data collection and configuration settings, StereoVision is capable of providing security managers with predictable metrics tied to asset protection, compliance and risk.

HOW IT WORKS

StereoVision uses time-of-flight technology to monitor the compartment of a security revolving door or mantrap portal. The technology is used to determine displacement and distance by measuring the time it takes light to travel from the device to an object inside the door and back. The system can accurately tell the difference between two people entering through a single compartment and one person holding a box or luggage to minimize false rejections. The near-infrared light sensor is not affected by sunlight or reflections, which eliminates any environmental impairment of the system at locations near the exterior of buildings.

StereoVision sensors send out an infrared light pulse that reflects off the object and / or persons in the door segment. Using the reflected light captured by the sensor, a 3D image of the objects in the door is generated. Special software is used to analyze the events and settings of the sensors. These settings can be further fine-tuned to obtain even more accurate readings and results. A delicate balance is found between desired security level and necessary throughput or traffic requirements.

KEY FEATURES

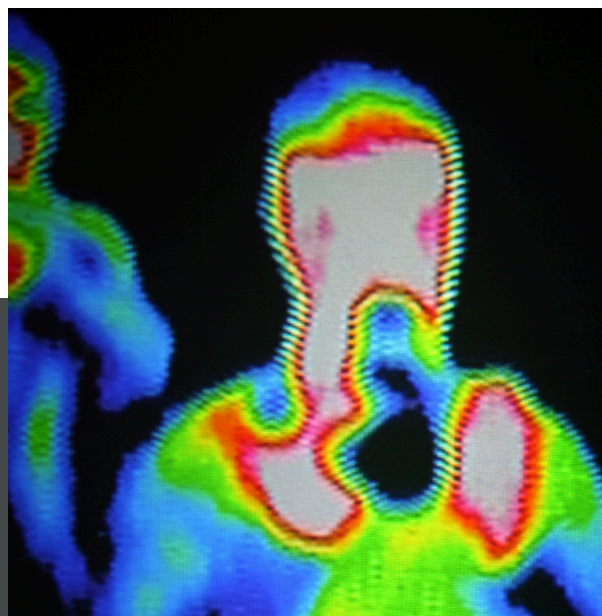
- Prevents piggybacking (two people attempting to enter the door at one time)
- Replaces traditional weight systems or contact mats
- Sunlight or reflections do not impair sensor technology
- Differentiates between two people and one person with an object
- Seamless integration with access control systems
- Provides predictable metrics tied to compliance and risk
- Fully adjustable to suit the owner's requirements

KEY BENEFITS

- Piggybacking prevention ensures only one authorized user can enter at a time
- Accurate for all users regardless of height or weight
- Reduced / eliminated guard salary allows for quick ROI
- Data collection allows for the accurate prediction of the risk of infiltration

COMPATIBLE PRODUCTS

- Circlelock Solo
- Circlelock Combi
- Tourlock 180



OUR REACH IS GLOBAL.

We have been in business for 150 years manufacturing premium aesthetic and security entrance solutions in the Netherlands, United States of America and China. We can confidently say that we cover every corner of the globe with subsidiary companies in major cities across the globe. Furthermore our global export division not only partner with our distributors, but also offer direct sales and service to every territory. This wide net allows us to have a strong global footprint as well as a personal grasp of local markets and their unique entry requirements.

To find your closest Boon Edam expert, please go to:
www.boonedam.us/contact



Boon Edam Inc.
T +1 910 814 3800
E sales@boonedam.us
I www.boonedam.us


BOON EDAM
YOUR **ENTRY** EXPERTS.