

3/41



**BOON EDAM**  
YOUR **ENTRY** EXPERTS.



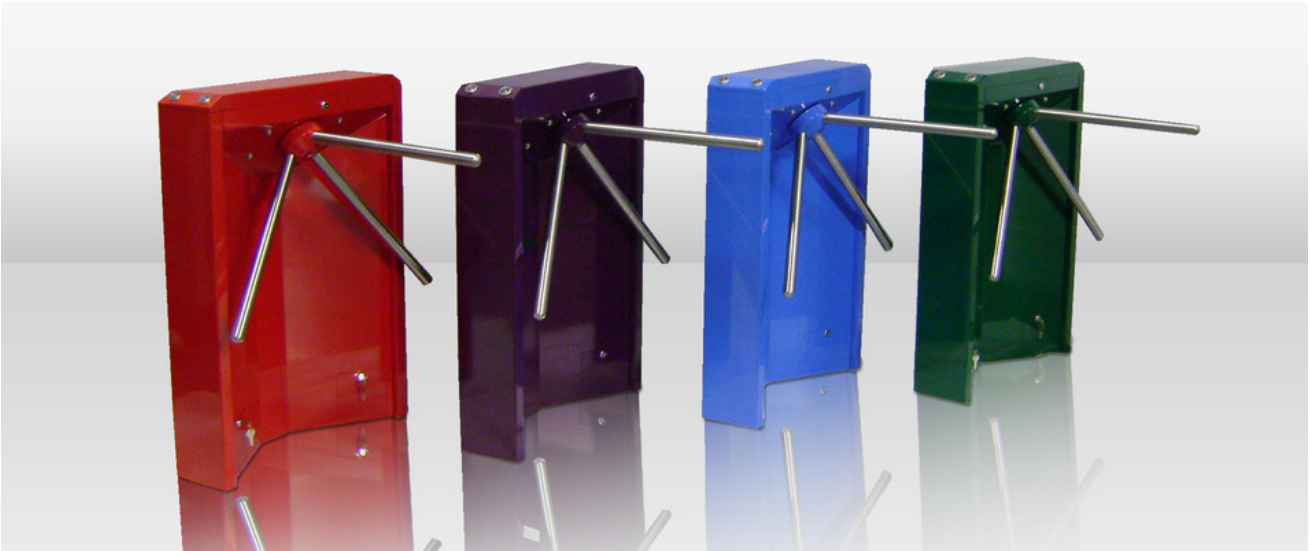
DETER UNAUTHORIZED ENTRY



## TRILOCK 60.

THE DURABLE SECURITY TURNSTILE





## OVERVIEW

For any location that requires effective crowd management, a tripod turnstile slows traffic down and facilitates closer monitoring of ingress by staff or security guards. While the turnstile can be used for one-way traffic, typical traffic flow is two-way, one direction at a time. Users must pause and take turns before proceeding through the turnstile.

## RELIABLE AND TROUBLE-FREE

The sturdy construction and simple mechanisms that constitute this entrance solution mean that service and maintenance are reduced. The tough materials used also mean that the turnstile guarantees a long lifespan. The combination of these two features means that you are left with an economical product which will serve you and your valuable visitors for long-run.

## KEY FEATURES

- Premium materials
- Smooth rotation
- Easy installation
- Indicator lights (green/red) for easy use and flow
- Rotation detection switch
- Rigid or collapsible arm set
- Additional flexible options available to fine-tune or 'Level Up'

## TAKING SECURITY OUTDOORS

This outdoor tripod turnstile is compact, yet strong and allows you to construct multiple lane set-ups. Further flexibility is offered by allowing you many opportunities to level up on your aesthetics and order this entry solution in your brand colors or branding – to compliment your secured areas perfectly. The standard stainless steel components are built to last and to ensure even the toughest climate conditions.

## KEY BENEFITS

- Portable and convenient
- Long lifespan
- Capable of operating under abusive conditions
- Aesthetics suitable for outdoor applications
- Minimal maintenance
- Ultra-quiet operation
- Effective at managing moderate crowds

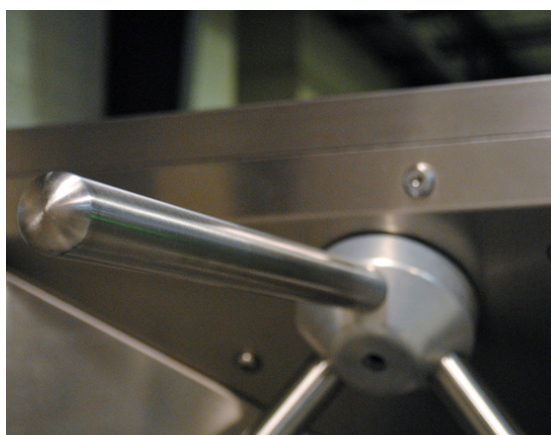
## SUGGESTED SEGMENTS

- Leisure / recreation
- Transit
- Manufacturing
- Education
- Entertainment venues

## SCALABLE FLEXIBILITY IS THE FUTURE

The ability to integrate a large variety of secondary security technology into our tripod turnstiles is the ideal way in which to fine-tune by 'Leveling Up' their entrance security when increased protection is required.

Meeting your security goal easily and within your budget is the reason why we work together with you to ensure that by using these options, you end up with a product that outperforms the others safely, beautifully and profitably.



## PUTTING THE POWER BACK IN YOUR HANDS

One size does not fit all, and that is why we at Boon Edam believe in offering modular solutions. This approach allows the security professional to design a tailored entrance solution that balances security and safety with aesthetics.

The result is a unique entrance that fits the needs of each industry, application and individual company. To get started, choose from an array of quality standard options. Then, 'Level Up' where it matters most to your company – whether that be in terms of throughput, security, safety, aesthetics, technology or user comfort – or a combination of each. A modular solution approach truly puts the power back into your hands - the power to create a refined entry with ease.

**You can level up in any of these categories:**



THROUGHPUT



SECURITY



SAFETY



AESTHETICS



TECHNOLOGY



COMFORT



SERVICE

# LEVEL UP

If our standard specifications do not quite suit your needs, we open up opportunities for you to 'Level Up' where it counts most. You can also do this according to your most motivating value driver.

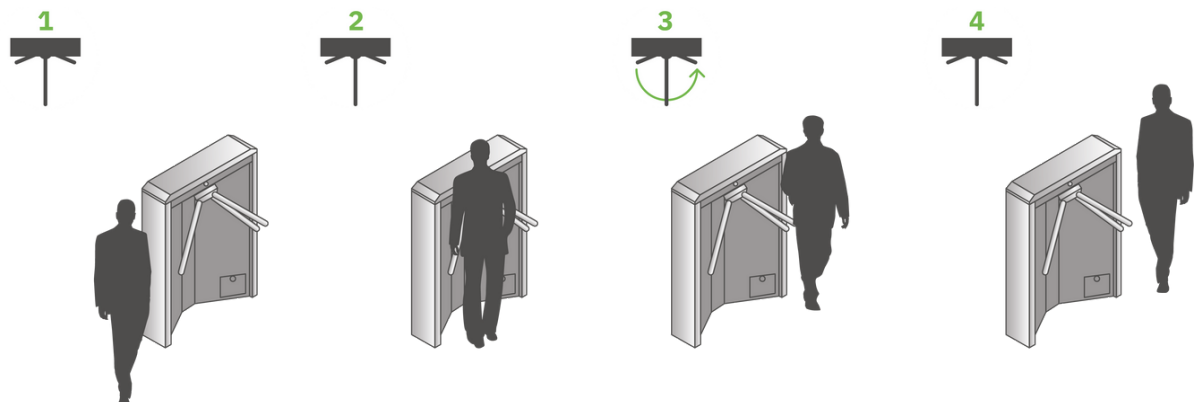
The specification table shows you our standard product options, and to the right of these, you can easily see, and consider, any compatible 'Level Up' options for fine-tuning the Trilock 60.



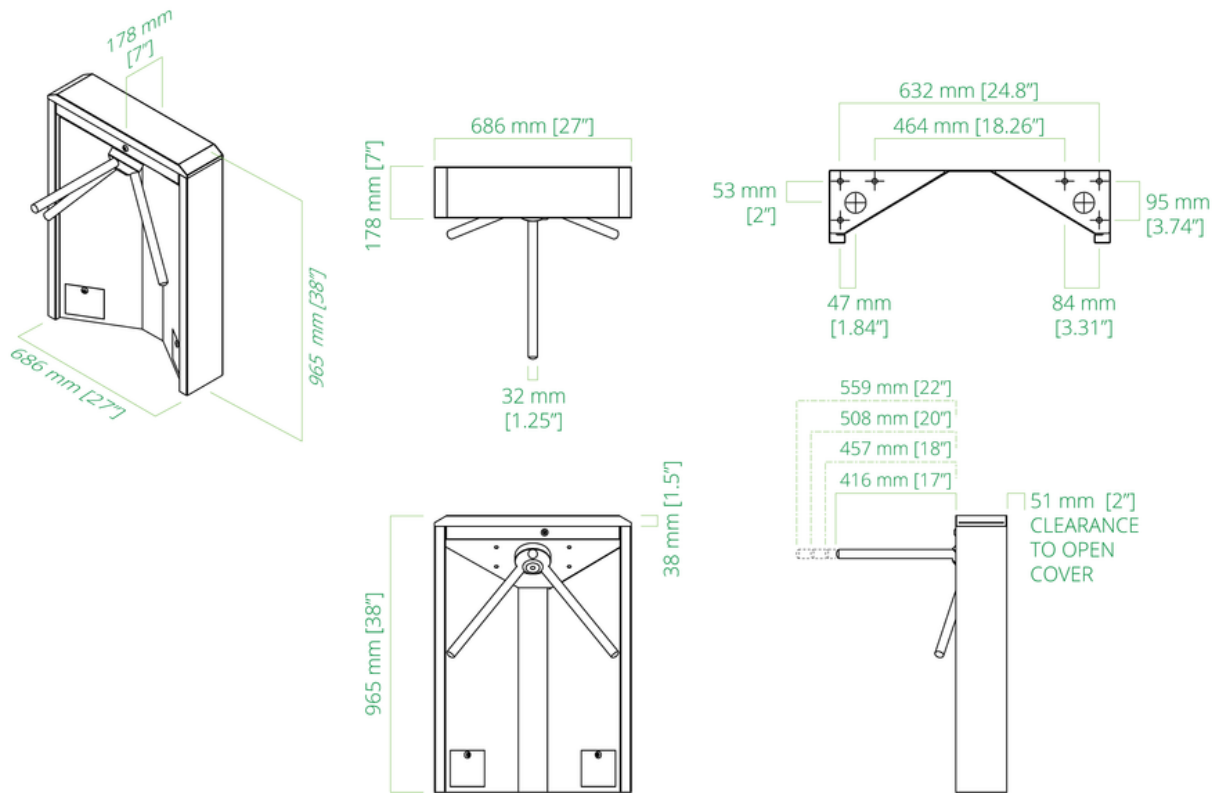
## TECHNICAL SPECIFICATIONS

 <b>THROUGHPUT</b>	STANDARD	LEVEL UP OPTIONS
Throughput	20-25 People per minute	
Cabinet Width	178 mm / 7"	
Cabinet Height	965 mm / 38"	
Cabinet Length	686 mm / 27"	
Passage Width	457 mm / 18"	508 mm / 20", 559 mm / 22"
Overall Lane Width	635 mm / 25"	686mm / 27", 737 mm / 29"
Barrier Height	838 mm / 33"	
 <b>SECURITY</b>	STANDARD	LEVEL UP OPTIONS
Access Control Integration	Dry contacts for virtually any access control device	
Key Switch Panel	Electric key override (entry, exit or both) for remote locking/unlocking of turnstile	
 <b>SAFETY</b>	STANDARD	LEVEL UP OPTIONS
Fail Safe Operation	Lock and motor both disengage in the event of a power failure	Fail secure: lock and motor remain locked in the event of a power failure
Fire Alarm Connection	Emergency egress settings depend on local regulations and or customer request	
 <b>AESTHETICS</b>	STANDARD	LEVEL UP OPTIONS
Cabinet Material	Stainless steel	
Cabinet Color	Stainless steel	Other colors: On special request
		Branding: On special request
 <b>TECHNOLOGY</b>	STANDARD	LEVEL UP OPTIONS
Power Supply	110-240 VAC, 50 / 60 Hz	<b>INTEGRATION OPPORTUNITIES:</b> <ul style="list-style-type: none"> <li>• BoonTouch external control panel (up to 6 lanes)</li> <li>• Pedestrian counter</li> <li>• Coin/token operation</li> <li>• Remote push button</li> <li>• Serial port interface</li> </ul>
Operating Power	220W	
Operating Temperature	-15°C / +5°F to +50°C / +113°F	
Weight	65 kg / 110 lbs	
Card Reader Mount	On top of turnstile cabinet	
 <b>COMFORT</b>	STANDARD	LEVEL UP OPTIONS
Disabled Access		Trilock Side Gate access gate with 915 mm / 36" passage width
Portability		Platform, railing and wheels
Visual Cues		Indicator lights (red / green) and arrow pictograms
Extended Arm Lengths		Longer arm length creates a wider lane to enhance user comfort
Heavy-Duty Foam Sleeves		Covers for turnstile arms to minimize touching hot metal

# WORKING PRINCIPLE



# TECHNICAL DIMENSIONS







## SERVICE AND MAINTENANCE

With hundreds or thousands of visitors passing through an entry every day, continued and reliable operation is vital. Regular service and maintenance can prevent unexpected hardware breakdowns. Boon Edam's service and maintenance teams across the world are experienced in the effects the local conditions have on the wear and tear of your entry solutions and can offer specialized service and maintenance contracts that correspond to those conditions perfectly.



## COMPLIANCE

The goal of an organization is to safeguard the valuable assets inside – both people and property. As is often the case, industries must comply with relevant local and global laws, policies and regulations, to achieve the important goal of overall safety and security. Failure to meet the appropriate measures and criteria set out in these regulations could result in catastrophic incidents and substantial fines.

Boon Edam security entrances are trusted solutions that allow organizations to meet compliance regulations related to restricting access to areas within a building. We take compliance and safety very seriously and ensure that our products are manufactured, installed and maintained to keep up the strict criteria required in all our countries. We are always improving and always committed to making sure our products are compliant and certified. More information can be found on our website under 'Our Responsibility'.

### **The Trilock 60 complies with the following North American standards:**

- UL standard 294
- CAN/ULC S319

# OUR REACH IS GLOBAL.

---

We have been in business for 150 years manufacturing premium aesthetic and security entrance solutions in the Netherlands, United States of America and China. We can confidently say that we cover every corner of the globe with subsidiary companies in major cities across the globe. Furthermore our global export division not only partner with our distributors, but also offer direct sales and service to every territory. This wide net allows us to have a strong global footprint as well as a personal grasp of local markets and their unique entry requirements.

To find your closest Boon Edam expert, please go to:  
[www.boonedam.us/contact](http://www.boonedam.us/contact)



**Boon Edam Inc.**  
T +1 910 814 3800  
E [sales@boonedam.us](mailto:sales@boonedam.us)  
I [www.boonedam.us](http://www.boonedam.us)

V1-2211

  
**BOON EDAM**  
YOUR **ENTRY** EXPERTS.