



YOUR  
**ENTRY**  
EXPERTS.

## THE BOON EDAM EXPERIENCE.

### WITH US **YOU ARE IN SAFE HANDS**

In a busy world, which keeps on moving, you want to feel safe at work and at leisure. Whether you are a visitor entering or exiting a space or an employee trusting your safety in the infrastructure, we provide the means to keep you safe while you get on with your daily business.

Take a journey to find the ideal answer to your entry requirements, and discover the path that firmly secures our position as the entry experts.



# YOUR EXPERIENCE.

As a third generation Dutch family business, we pride ourselves on our knowledge and dedication to this specialised market. From the moment you talk to us about your entry vision, all the way through the decision making process until after sales and service – you are in safe hands with us. This is how we do it:

## STRONG CONNECTION

Wherever you are in the world, Royal Boon Edam is close-by.

## PROVEN RELIABILITY

Long standing, loyal customers prove our consistent commitment and reliability.

## CAREFULLY TAILOR-MADE

Premium standard products can be fine-tuned with you in control (See 'Level Up').

## ON-TREND CRAFTSMANSHIP

The perfect balance of new technology with care and attention to detail.

## SECURE INVESTMENT

Your ROI is important to us, and we help show you how.

## TRUSTED PARTNERSHIPS

We are in it for the long-term with you.

## HOW IT WORKS

The reason our customers choose to work with us is that we have proven ourselves to be different. In a world full of merely average products, which all blend in together to look and feel the same – we pride ourselves in offering more. This value that we add to our already premium selection of entry solution is the difference we know our partners are looking for. We want to share some of this insight with you on the road to help you understand why we are the only choice when it comes to entrance solutions and services.



**STRONG  
CONNECTION**



**PROVEN  
RELIABILITY**



**CAREFULLY  
TAILOR-MADE**



**ON-TREND  
CRAFTSMANSHIP**



**SECURE  
INVESTMENT**



**TRUSTED  
PARTNERSHIPS**





## STRONG CONNECTION.

We can confidently say that we cover every corner of the globe. Furthermore, our Global Export division do not only partner with our distributors but also offer direct sales and service to every territory. This means that we can provide you with a fast and local experience, wherever you are. We are always close at hand to ensure your sales and service needs are met. We are, most importantly, people helping people.

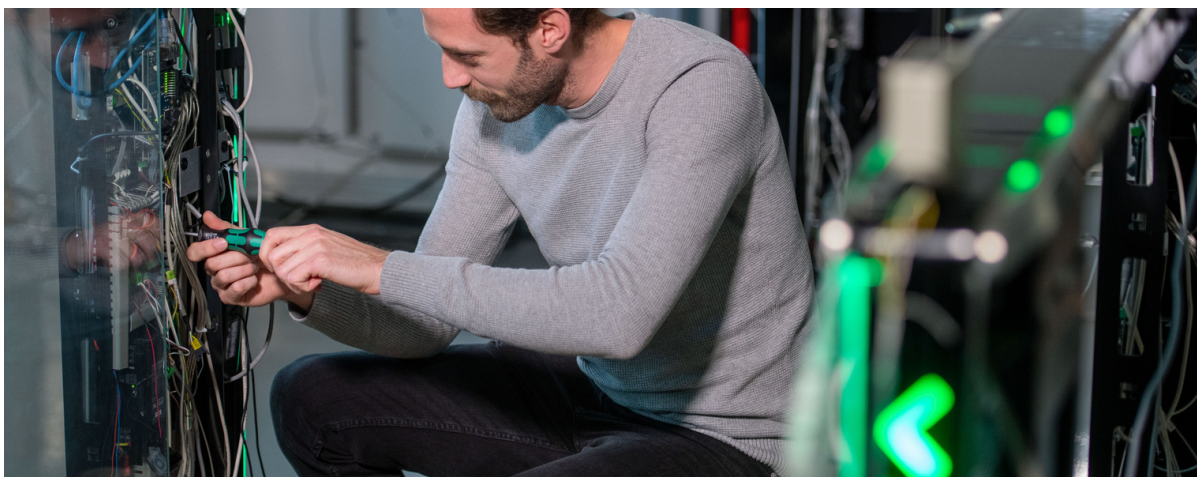


## PROVEN RELIABILITY.

We have been in the entry sector for more than 140 years. This history has left behind a legacy of successful projects which, to this day, we are still proud of. Our products stand the test of time and continue to offer a safe, welcoming experience. Many of our customers are long-standing, and they stay loyal to us because of our reliability, and the mutual trust we nurture in our project partnerships.







## CAREFULLY **TAILOR-MADE.**

We offer custom solutions to standardised products and can, therefore, add exclusive value to the entire customer experience. These are not just words – they are sincerely supported by the many testimonials and real-life experiences of our friends and partners.



## ON-TREND **CRAFTSMANSHIP.**

We are not a cold conveyor belt in a sterile factory, mass producing products. Our colleagues and customers are fiercely loyal, and many have been with the business for decades. We think regarding efficient flow, safety, user comfort, energy preservation, technology, innovations and real people.







## SECURE INVESTMENT.

Beyond the initial cost of your purchase, we care about your return on investment (ROI). Our experts can help you make an educated decision considering factors such as energy savings and CO2 reduction.

Security is something that is high on everyone's radars in these times, and we are proud to be able to offer scalable and flexible solutions for this critical area. Regardless of your level of security requirement, we have the perfect product and plan to make it easy for you.



## TRUSTED PARTNERSHIPS.

Our abilities cover all phases of a project, from design and engineering through to manufacture, installation culminating with service and maintenance. We partner with our customers every step of the way, to guarantee that the result is worthy of the premium Boon Edam brand.

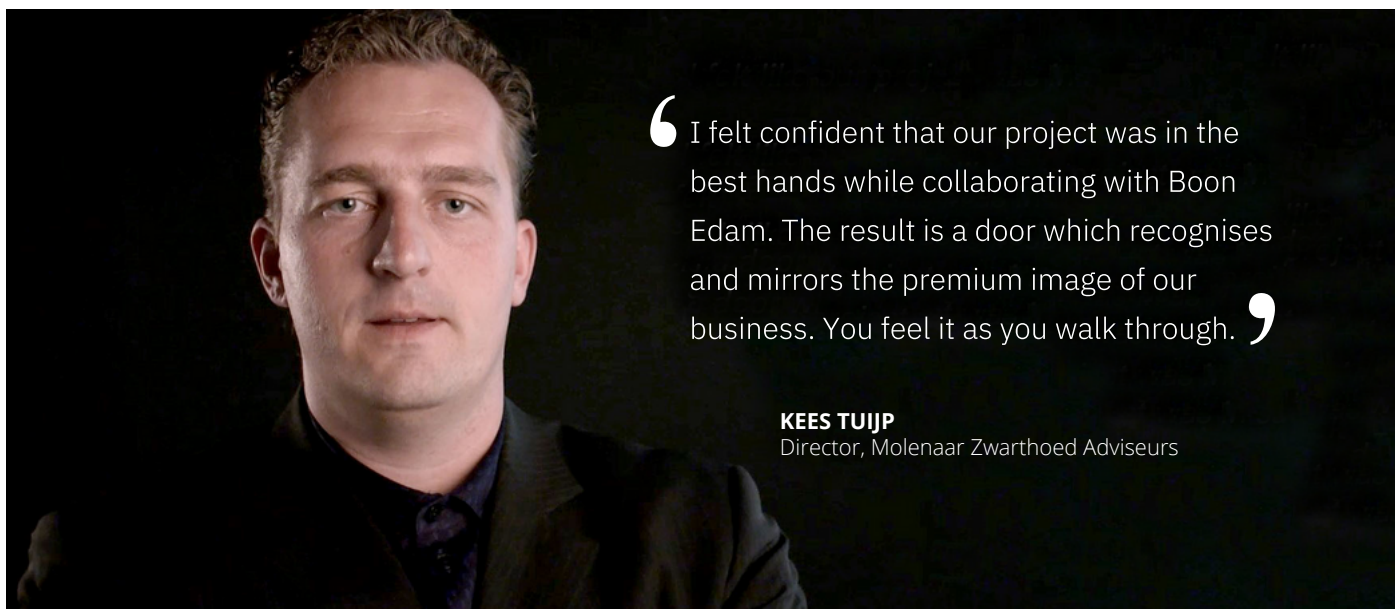


# DO NOT JUST TAKE OUR WORD FOR IT.

We have invested hours talking to all our customers, from architects to security managers and construction professionals, and have identified six key commitments, or points of difference, which we believe make us the best choice of partner for you. We believe that the foundation of us being an industry leader is based on our unique Boon Edam Experience.

Our customers keep coming back because they recognise that we, and of course our products, are valuable to them. We share our knowledge and findings, invest a lot of time in research and development, and can proudly claim to know the most about our products and how to achieve an optimal user experience – for all. Attention to detail is important, and it is the small touches that matter.

With us, you are in safe hands.



“ I felt confident that our project was in the best hands while collaborating with Boon Edam. The result is a door which recognises and mirrors the premium image of our business. You feel it as you walk through. ”

**KEES TUIJP**  
Director, Molenaar Zwarthoed Adviseurs



“ Being aesthetically secure and on-trend is critical to our architects. We do well at listening to their brief and delivering an entrance solution that is crafted to their unique security and design needs. ”

**JEANNETTE LENSSEN-KWANTES**  
Architect Consultant, Boon Edam Netherlands B.V.



“ Growing partnerships with distributors around the world means that our customer's specific, local-market needs are met with global experience. ”

**BAS VAN VROONHOVEN**  
Managing Director, Boon Edam Global Export B.V.



# THE BOON EDAM EXPERIENCE.

7

OUR ENTRY EXPERTS | BOON EDAM



In today's high risk and sensitive political climate, buildings have to provide safety, whilst still remaining welcoming to staff and visitors alike. Our revolving doors and speedlanes offer a welcoming hand as the visitor enters the environment.

With global offices and manufacturing plants in the Netherlands, China and America, we are able to offer you a collaborative, helping hand wherever you and your project are based. Convenience and efficiency are part of the service we offer you.

## KEY BENEFITS

- Working with a team from project conception into the future
- Establishing trust
- A full collaboration
- Building a lasting relationship
- Setting expectations and outcomes upfront – no surprises
- Working with somebody close-by

THE BOON EDAM EXPERIENCE IS SUPPORTED BY:

## BOONSELECT - THE SOLUTION MAPPING TOOL

BoonSelect is a solution mapping tool to guide decision makers in making the best entrance product decisions for the long term. All 7 factors should be considered throughout the decision making process to make the most well-rounded entrance decision.

Piece your puzzle together with us:

[www.boonedam.com.au/boonselect](http://www.boonedam.com.au/boonselect)



# OUR REACH IS GLOBAL.

---

We have been in business for more than 140 years manufacturing premium aesthetic and security entrance solutions in the Netherlands, United States of America and China. We can confidently say that we cover every corner of the globe with subsidiary companies in major cities across the globe. Furthermore our global export division not only partner with our distributors, but also offer direct sales and service to every territory. This wide net allows us to have a strong global footprint as well as a personal grasp of local markets and their unique entry requirements.

To find your closest Boon Edam expert, please go to:

[www.boonedam.com.au/contact](http://www.boonedam.com.au/contact)



**Boon Edam Australia Pty Limited**

**T** 1300 689 905

**E** [info@boonedam.com.au](mailto:info@boonedam.com.au)

**I** [www.boonedam.com.au](http://www.boonedam.com.au)

  
**BOON EDAM**  
YOUR **ENTRY** EXPERTS.